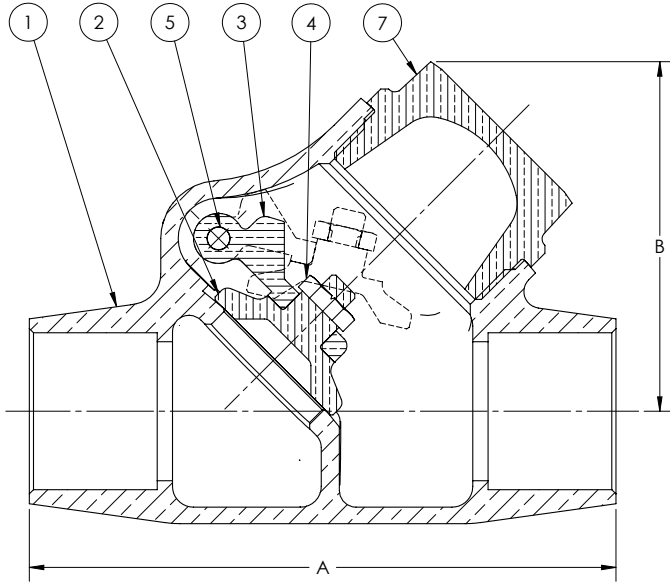


200 CWP • Threaded Cap • Brass/Bronze Disc • Solder Ends

1340 Swing Check Valve



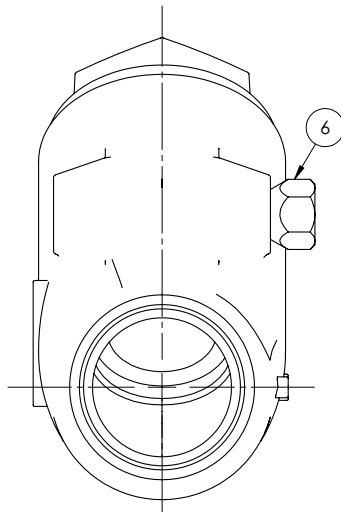
Materials of Construction

| No. | Description | Material | ASTM Spec. |
|-----|----------------|----------------------|---------------|
| 1 | Body | Bronze | B-62 C83600 |
| 2 | Disc | (1/2" - 3/4") Brass | B-16 H02 |
| | | (1" - 2") Bronze | B-61 C92200 |
| | | (2 1/2" - 3") Bronze | B-62 C83600 |
| 3 | Hinge | Bronze | B584 C87600 |
| 4 | Lock Nut | Brass | B-16 H02 |
| 5 | Hinge Pin | Stainless Steel | A276 Type 304 |
| 6 | Hinge Pin Plug | Brass | B-16 H02 |
| 7 | Cap | Bronze | B-61 C92200 |

Caution: Before installing solder-joint valves, be sure solder or brazing alloy melting point is high enough to withstand line pressure, temperature conditions, and is compatible with fluid medium.
See page 7 for Adjusted Pressure-Temperature Ratings.

Caution: Not recommended for use with reciprocating pumps or air compressors in liquid or gas services.

| Industry Standards |
|--------------------|
| MSS SP-80, Type 3 |



Dimensions and Weights

Inches (millimeters) - Pounds (kilograms)

| Valve Size | Dimensions | | Wt. |
|------------|------------|-------|--------|
| | B | A | |
| 1/2 | 1.64 | 2.69 | 0.57 |
| | (42) | (68) | (0.26) |
| 3/4 | 1.92 | 3.61 | 0.95 |
| | (49) | (92) | (0.43) |
| 1 | 2.52 | 4.22 | 1.54 |
| | (64) | (107) | (0.70) |
| 1 1/4 | 2.95 | 4.81 | 2.35 |
| | (75) | (122) | (1.07) |
| 1 1/2 | 3.43 | 5.58 | 3.72 |
| | (87) | (142) | (1.69) |
| 2 | 4.19 | 6.85 | 6.12 |
| | (106) | (174) | (2.78) |
| 2 1/2 | 5.04 | 7.78 | 9.31 |
| | (128) | (198) | (4.23) |
| 3 | 5.98 | 9.19 | 14.10 |
| | (152) | (233) | (6.41) |