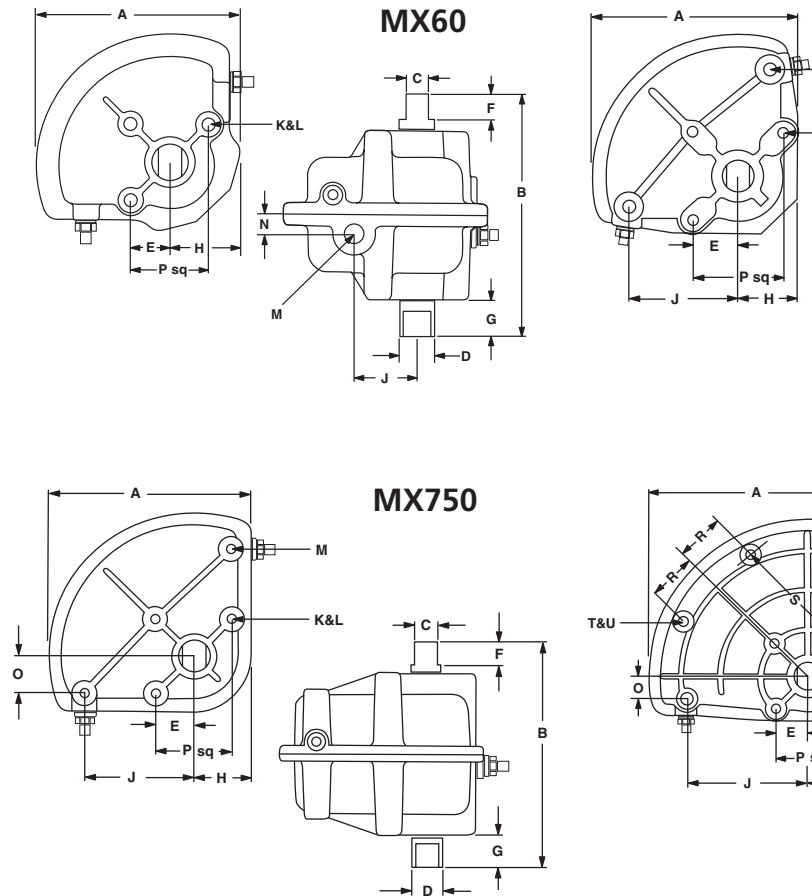


MATRYX® VANE ACTUATORS MX

DESIGN FEATURES



MATRYX VANE

STANDARD FEATURES:

- Double Acting and Fail Safe versions available
- Housing: Die-cast aluminum
- Operating Pressure: 40 to 120 PSIG
- Temperature Range: 0°F to 225°F
- Powerful actuation in a compact and lightweight package
- Only one moving part
- Dual external travel stops allow rotation adjustment of up to $\pm 10^\circ$ at each end of the stroke
- Fail Safe (-FS) models use a pneumatic accumulator to assure valve closure upon loss of supply pressure
- Stacking two vane actuators enable 180° movement (2- or 3-position)

OPTIONAL FEATURES:

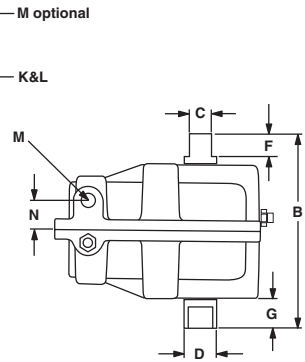
- Limit Switch
- Locking Device
- Breather Block
- Solenoid Valve
- Positioners
- High or low temperature trim
- PTFE interior coatings
- Sandwich de-clutchable manual gear override

Model	A	B	C	D	E	F	G
MX60	4.87 (124)	5.88 (149)	0.56 (14.3)	0.87 (22.2)	0.94 (24)	0.63 (16)	0.91 (23)
MX200	6.94 (176)	6.56 (166)	0.75 (19)	1.06 (27)	1.50 (38)	0.75 (19)	1.00 (25)
MX450	9.25 (235)	9.56 (243)	1.12 (28.6)	1.44 (36.5)	1.75 (44)	1.13 (29)	1.50 (38)
MX750	9.31 (236)	10.50 (267)	1.13 (28.6)	1.44 (36.6)	1.75 (44)	1.13 (29)	1.50 (38)
MX1250	10.88 (276)	10.00 (254)	1.13 (28.6)	1.44 (36.6)	1.75 (44)	1.13 (29)	1.50 (38)
MX3000	13.62 (346)	16.63 (422)	1.50 (38.1)	2.50 (63.4)	2.30 (58)	1.31 (33)	1.56 (39)
MX60FS	8.94 (227)	5.88 (149)	5.69 (115)	11.18 (284)	8.00 (203)	3.50 (89)	1/4-18 [NPT]
MX200FS	11.75 298	7.63 194	6.88 175	13.63 347	8.81 224	3.63 92	1/4-18 [NPT]
MX450FS	14.69 (373)	9.93 (245)	8.00 (203)	16.88 (429)	10.50 (267)	4.38 (111)	1/4-18 [NPT]
MX750FS	14.75 (375)	10.50 (267)	8.00 (203)	18.68 (475)	12.00 (305)	4.25 (108)	1/4-18 [NPT]
MX1250FS	21.00 (534)	10.88 (276)	12.50 (318)	20.38 (518)	12.00 (305)	3.75 (95)	1/4-18 [NPT]
MX3000FS	22.38 (568)	16.68 (424)	10.13 (257)	26.18 (665)	16.00 (406)	8.38 (213)	1/4-18 [NPT]

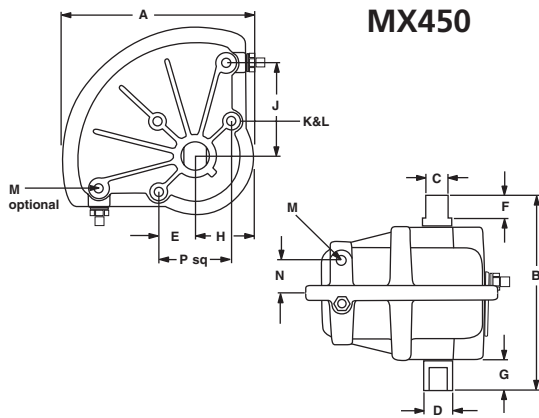
SPECIFICATIONS

MATRYX™ VANE ACTUATORS MX

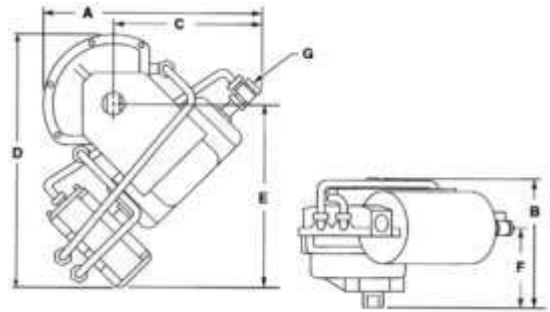
MX200



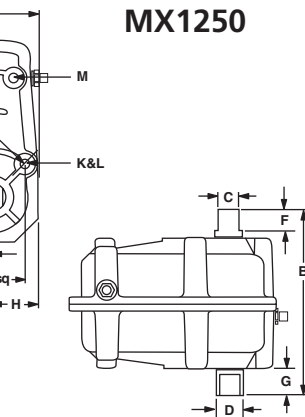
MX450



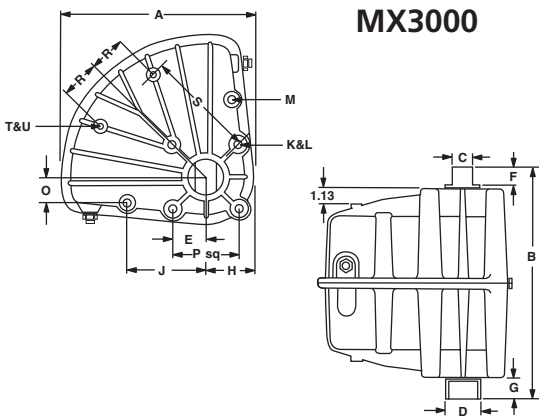
MX60FS



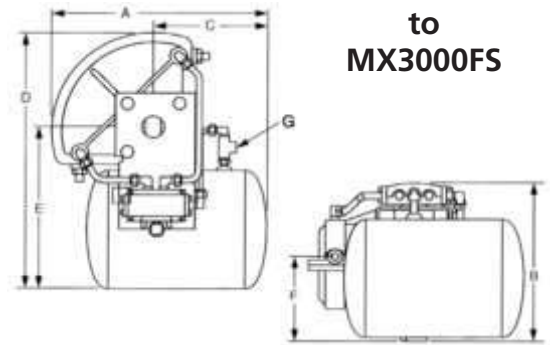
MX1250



MX3000



MX200FS to MX3000FS



DIMENSIONS Inches (Millimeters) / Pounds (Kilograms)

H	J	K	L	M	N	O	P	R	S	T	U	Wt.	Tank Volume
1.69 (43)	1.50 (38)	5/16-18 3 (qty.)	0.50 (13)	1/4-18 2 (qty.)	0.50 (13)	-	1.88 (48)	-	-	-	-	3.0 (1.4)	-
2.13 (54)	3.62 (92)	3/8-16 3 (qty.)	0.56 (14)	1/4-18 4 (qty.)	0.94 (24)	-	3.00 (76)	-	-	-	-	7.0 (3.2)	-
2.88 (74)	4.63 (118)	1/2-13 3 (qty.)	0.81 (21)	1/4-18 4 (qty.)	1.63 (41)	-	3.50 (89)	-	-	-	-	14.0 (6.4)	-
2.63 (67)	5.00 (127)	1/2-13 3 (qty.)	0.75 (19)	1/4-18 4 (qty.)	-	1.75 (44)	3.50 (89)	-	-	-	-	18.0 (8.2)	-
2.50 (63)	6.38 (162)	1/2-13 3 (qty.)	0.62 (16)	3/8-18 4 (qty.)	-	1.19 (30)	3.50 (89)	2.50 (63)	6.63 (168)	1/2-13 2 (qty.)	0.62 (16)	22.0 (10.0)	-
3.46 (88)	5.50 (140)	3/4-10 4 (qty.)	1.50 (38)	3/8-18 4 (qty.)	-	1.88 (48)	4.60 (117)	2.63 (67)	7.69 (195)	1/2-13 2 (qty.)	0.56 (14)	65.0 (29.6)	-
-	-	-	-	-	-	-	-	-	-	-	-	18.0 (8.0)	40 cu. in.
-	-	-	-	-	-	-	-	-	-	-	-	24.0 (11.0)	95 cu. in.
-	-	-	-	-	-	-	-	-	-	-	-	28.0 (13.0)	302 cu. in.
-	-	-	-	-	-	-	-	-	-	-	-	37.0 (17.0)	542 cu. in.
-	-	-	-	-	-	-	-	-	-	-	-	40.0 (18.0)	634 cu. in.
-	-	-	-	-	-	-	-	-	-	-	-	102.0 (47.0)	1963 cu. in.